

## Mission

### Make Shakespeare cool again

## An Invitation

Live theatre has a *responsibility* to be different.

Going to the theatre should never be the same experience as going to the multiplex on a Saturday night. But, all too often, it is. Audiences sit quietly in the dark, passively watching the events onstage through the sanitary buffer of the "fourth wall." The audience exists in one reality, the actors in another.

At Knighthorse, we want to change all that. We *want to connect* with our audience; we *need to*. Your energy, enthusiasm and "willingness to play" are absolutely vital to our success. Because we travel without sets and use only minimal props, the "magic" of our productions is dependant upon the power of our combined imaginations. But we wouldn't have it any other way. Because, when inspired by the majesty of Shakespeare's language, the images you can create in your "mind's eye" are far more distinct, elaborate and truly beautiful than anything we could build with some wood, a bucket of paint and a few nails.

At Knighthorse, actor and audience occupy the same space. We touch you, talk to you, sit down next to you. That's why we turn on all the lights; we need to *see* you in order to *share* our performance with you. We ask that you become more than just passive observers; we (not so subtly) invite you to become actively engaged and join us on a magical journey into a make-believe world. We create living, breathing theatre. Every performance is new; each show is unique – because of *YOU!*

Let us lead you into the light We will take you places you never thought you'd go.

## About

### Shakespeare for Everyone and Anyone

Knighthorse is accessible theatre, appropriate for kids of all ages. It makes no difference if you have a lot of experience or none at all; we have a program that is right for you. We have not only inspired senior citizens but connected with kids as young as six.

Everything we do is done in the hope of showing our audience, regardless of age, that Shakespeare can indeed be FUN! In fact, our greatest compliment came from a group of fourth and fifth graders in Aviano, Italy, who presented us with a hand-made card with these words scrawled across the front in big, bold letters:

"Thank you for showing us that Shakespeare is cool."

Quite simply, that's what we do – let us do it for you.

Knighthorse is more than just excitingly innovative theatre.

Amy and I created this company because we needed to find a way to satiate our passion for performance and our passion for teaching.

After all, what we do is fleeting unless we can spark discussion and exploration that lasts long after we've gone. One of the ways we do that is by bringing our unique brand of theatre into the classroom. Drawing on years of combined teaching experience and limitless enthusiasm, we create an explosive environment for learning where students cannot help but be changed in dramatic and lasting ways.

In short,  
we get Shakespeare  
off the page and onto the stage.

# Education

## Shakescenes

Wouldn't it be great if your students could actually see Shakespeare before they sat down to read him? Now they can! Let us kick-start your curriculum by getting Shakespeare off the page and onto the stage.

## Acting Shakespeare: Bringing the Text to Life

We show students how to "communicate" Shakespeare's ideas and images through an intense investigation of Shakespeare's words, phrases and structure. This workshop can be specifically tailored to students who are just beginning to read Shakespeare or advanced students who are getting ready to perform.

## Words, Words, Words: Leadership and Dynamic Speaking

We share techniques learned from years of performing which can be used to invigorate any piece of text for a modern audience. Be it a speech, a poem or even the back of a cereal box, we will show your students how to use language as a weapon to fire thoughts and images into the hearts of listeners, to make them hear – and, better yet, to make them want to hear more.

## Stage Combat

How do you create a realistic and dramatic fight on stage without sacrificing the safety and health of its participants? With technical precision, energy and enthusiasm. Using a combination of lecture and hands-on instruction, we give students a greater knowledge of combat techniques and an enhanced appreciation of fight choreography.

## Interpretation and Imagination: The Magic of Creating Theatre

We analyze the elements of storytelling by examining our own minimalist style of theatre, from the challenges of adapting a full-length script to playing multiple characters on a bare stage with scarce props and simple costumes.

## Sharing Shakespeare: Tips and Techniques for Teachers

A workshop designed specifically for those charged with educating young people about the mystery and mastery of Shakespeare's language, characters and plays. We provide invaluable insight into ways of attacking this sometimes daunting and often difficult task, giving you tangible techniques for igniting students' enthusiasm and imagination.

***Additional titles available upon request.***

***Workshops can be created and/or adjusted to meet the specific needs of teachers and students.***

**Artistic Director**  
**Tyrus Lemerande**

Born and raised in San José, California, Ty graduated from Bellarmine College Prep in 1988 and enlisted in the Navy. Two years later he accepted an appointment to the U. S. Naval Academy in Annapolis, Maryland, where he majored in English, toured with the Men's Glee Club and served as Masquerader's President. Ty graduated with merit in 1994 and worked for five years as a Public Affairs Officer in Washington, D.C., where his duties included serving as Print Media Coordinator for the Navy's flagship publication *All Hands Magazine*.

After leaving active duty in 1999, Ty studied acting at Penn State University, where he graduated with an M.F.A. in Theatre Arts in August 2002. While at Penn State, Ty also taught acting, guest lectured on *Henry V* at his alma mater in Annapolis, directed a production of *The Winter's Tale* and certified as an actor/combatant with the Society of American Fight Directors.

Ty is a commander in the Naval Reserve and is currently assigned to the Office of the Chief of Information at the Pentagon in Washington DC. He was recently recalled to active duty in support of Operation Enduring Freedom and served for seven months at International Security and Assistance Force Headquarters in Kabul, Afghanistan.

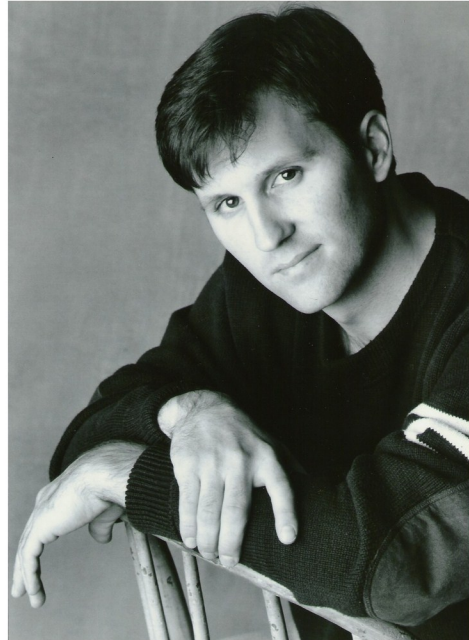
**Executive Director**  
**Amy McLaughlin**

Born in Boston, Massachusetts, and raised in the small town of Marshfield on the South Shore, Amy was the last of five siblings to attend Boston College where she majored in English and Theatre Arts.

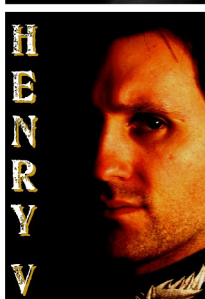
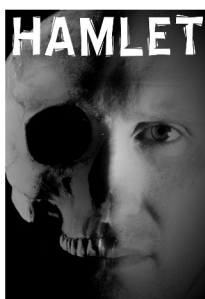
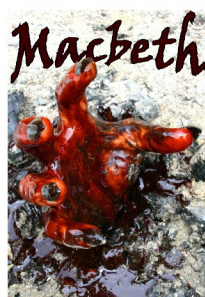
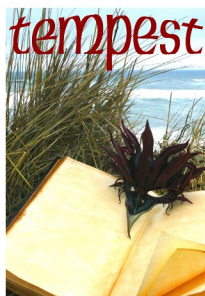
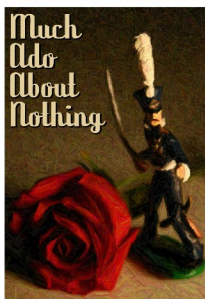
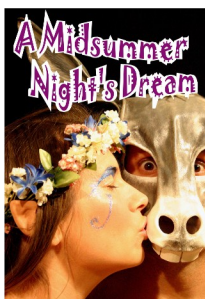
After graduating in May 1997, Amy worked at the Massachusetts Hospital School in Canton where she taught theatre to handicapped and terminally ill children for two years. She then attended Trinity Rep Conservatory in Providence, Rhode Island, and received her M.F.A. in Theatre Arts in May 2002. While at Trinity, Amy spent her summers teaching drama at Tufts Children's Creative Arts Camp in Medford, Massachusetts.

Ty and Amy met while performing with Shenandoah Shakespeare's *Brave New World* Tour in 2002-2003. They founded Knighthorse together in 2003 and were married in 2004. On July 5, 2009, they welcomed their first child into the world, a boy named Declan Thomas

# Bios



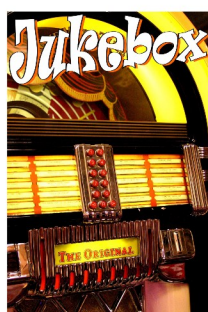




# Productions

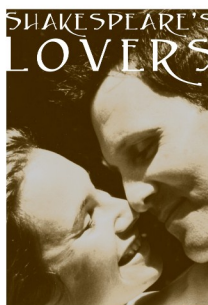
Knighthorse relies upon innovation and inspiration to create one- and two-person original adaptations of Shakespeare. Using minimal props and simple costumes on a bare stage, we change only our bodies and our voices as we slide, snap, slither and stretch from character to character, all the while inviting, exciting and igniting imaginations.

## Showcases



Two actors, 38 plays and lots and lots of words.

Pick a play – ANY play – and experience Shakespeare's language as never before. Hear the Bard's most famous scenes and speeches delivered, in an instant, with passion, energy and astounding clarity. Each and every performance is unique because of you. Pick a play you know. Pick a play you don't. 'Tis no matter. Your eyes will be opened, your spirits lifted and your imagination set free. So "push a button" and prepare to be blown away by the variety and volume of the Shakespearean Jukebox.



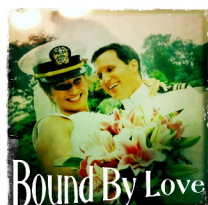
Shakespeare's most famous couples brought to life: Kate and Petruchio, Romeo and Juliet, Beatrice and Benedict, Hamlet and Ophelia, and many, many more.

The most-recognized and best-loved scenes in all of Shakespeare presented in an interactive and engaging style.



With her husband, and partner, deployed to Afghanistan, Amy crafted these two one-woman shows, which explore the impact and effect of love and war on the feminine psyche.

Showcasing several of Shakespeare's plays, Amy deftly switches between archaic verse and modern prose to create multiple characters while engaging imaginations to build intricate scenes on a bare stage.



Although connected by common themes, these shows are wholly independent of each other. Enjoy one or both, but be prepared to be moved by the emotional intimacy inspired by these very personal selections.